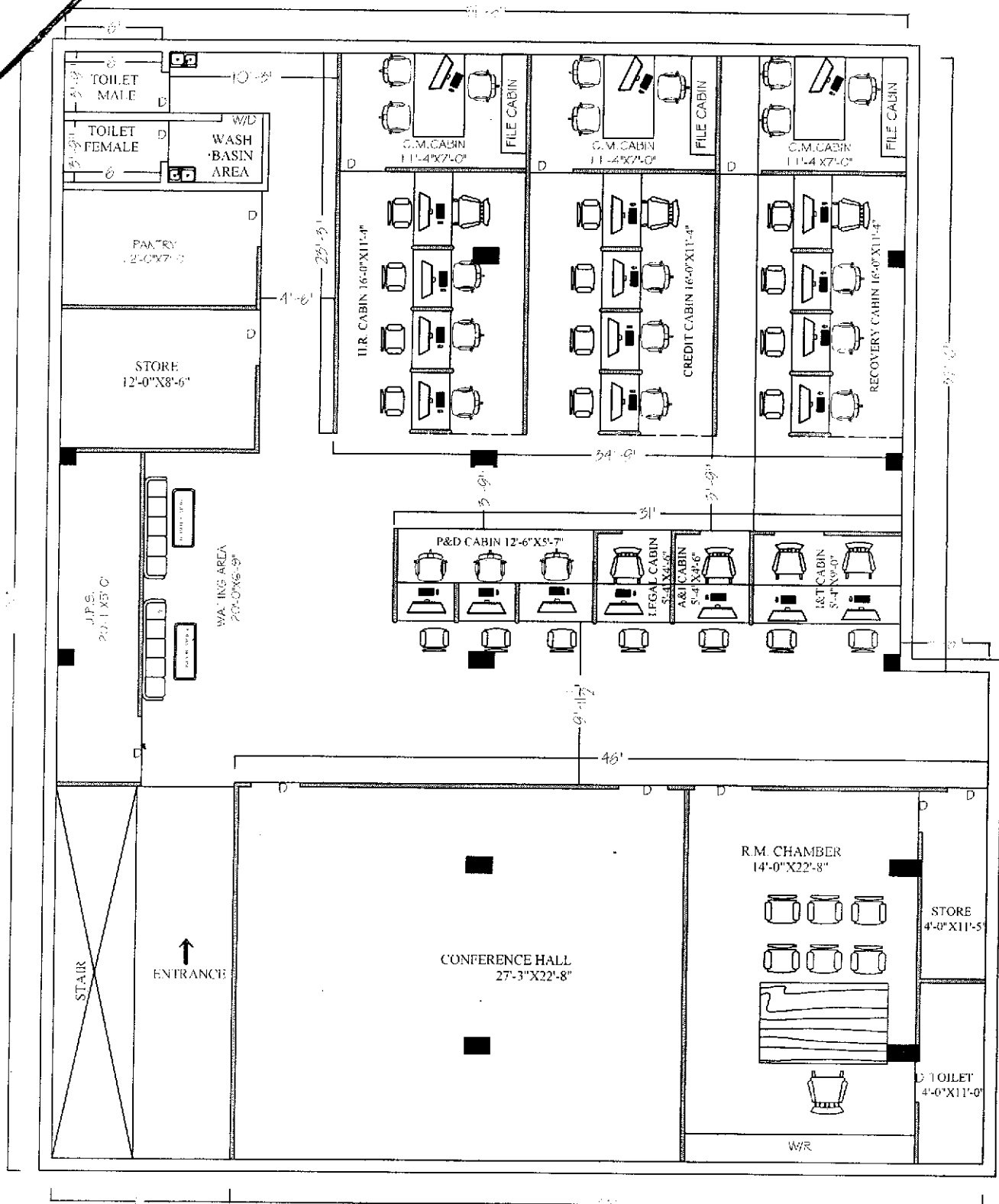


PROJECT - SPECIFICATION FOR FURNITURE & ELECTRICAL WORKS.		
BANK - BARODA U.P. BANK		
REGIONAL OFFICE AZAMGARH		
*ALL WORKS TO BE DONE AS PER TENDER CONDITIONS.		
A	FURNITURE ITEMS	
1	LAMINATES (IS-2046) / VENEER	GREEN LAM / CENTURY / ARCHID / FORMICA / SUNDEK OR APPROVED EQUIVALENT
2	COMMERCIAL PLY (IS-303) / WATERPROOF PLY (IS-710) / BLOCK BOARD (IS-1659) / FLUSH DOOR (IS- 2202)	ARCHID/CENTURY / EURO / GREEN OR APPROVED EQUIVALENT BY ETC.
3	ADHESIVES	FEVICOL / BLUECOAT/ VAMICOAL
4	LOCKS	GODREJ
	MULTIPURPOSE GROUP LOCK	E-MPL1-22 / E-MPL1C-22 (EBCO)
	NIGHT LATCH	8812 (GODREJ)
	CYLINDRICAL LOCK (SS MATT FINISH)	3792-WITH KEY AND 3786-KEYLESS (GODREJ) / C120SS (EUROPA)
	MORTISE DEAD LOCK (TWO WAY)	8815(GODREJ)
	MORTISE LOCK WITH DOOR HANDLE	MATIZ 8083(GODREJ)
5	DRAWER CHANNELS	GODREJ/ HATTICH/ OZONE
	TELESCOPIC CHANNELS (ZINK PLATED)	STD535(I)35/ STD525(I)35/ STD550(I)35/ STD560(I)35 (EBCO)
	BOTTOM CHANNELS (POWDER COATED)	BMDS 35/ BMDS 37/ BMDS 55/ BMDS 60 (EBCO)
6	GENERAL HARDWARE	SS MATT FINISH
	DOOR STOPPER	I) BLACK/IVORY/BROWN/SILVER COLOR POWDER COATED DS1 (EBCO) II) SPRING TYPE BLACK/BROWN/IVORY COLOR POWDER COATED (ECGL'S STERLING)
	HINGES	I) 3"/4"/5"/6" 1.8MM TH. SS MATT FINISH (SUZU) II) 75X12X19 1.2 MM TH. SS MATT FINISH FOR STORAGE (SUZU) III) AUTO CLOSE HINGES – SLIP ON HINGE- EURO / CLICK ON HINGE-I (EBCO) FOR STORAGE
	HANDLES 'D' OR 'C' TYPE	1) 3"/4"/6"10MM DIA SS 202 MATT FINISH (ANJALI)

	TOWER BOLT	3"/4"/6"/8" BRASS EXTRUDED SS MATT FINISH (OSWAL)
	SLIDING CHANNEL	EBCO MAKE APPROVED BY ARCHITEC/BANK.
7	FLOOR SPRING	
	60 KG	7477 (GODREJ) / M-74 (HARDWYN)
	80 KG	8293 (GODREJ) / M-74 (HARDWYN)
	100 KG	8294 (GODREJ) / M-76 (HARDWYN)
8	DOOR CLOSER	
	60 KG	DOUBLE SPEED 8292-SILVER, 7325- GOLDEN (GODREJ) / SCORPIO (HARDWYN)
	FIRE RATED 60 KG	1938 (GODREJ) / TRITON (HARDWYN)
9	PATCH FITTINGS FOR DOOR AND FIXED GLASS PARTITION (TOP/BOTTOM PATCH, PIVOT, PATCH LOCK, L ARM, L CONNECT, CONNECTOR, FLOOR SPRING, HANDLE, PLASTIC PROFILE)	GODREJ / XL C SERIES(DORMA) / OPF SERIES (OZONE) OR APPROVED EQUIVALENT
10	GLASS / MIRRORS	SAINT GOBAIN / MODI
11	ALUMINUM SECTION	JINDAL / INDAL / BANCO
12	WINDOW BLINDS	VISTA / AEROLUX/HUNTER DUGLUS / MAC
13	POLISH / PAINT	ASIAN PAINTS / BERGER / NEROLAC
14	PARTICLE BOARDS	NOVAPAN / DECO BOARD
15	COMPUTER ACCESSORIES	
	CPU HANGER/ SHELF	SIDE MOUNTED IS CPU HL SM (INNOFIT) /CPUSM(EBCO) , 4/2-SMCS (ZIPCO)
	CABLE MANAGER (60MM)	I) METAL - CO60ZN1(EBCO) II) PVC - CO 60 (EBCO) BLACK/IVORY/GREY COLOR
16	ACP PANEL	TIMEX / ALU DECOR / EURO OR APPROVED EQUIVALENT
19	WHITE FILM FOR GLASS	CRYSTAL / SONA MAKE VINYL FROSTED FILM
B	PAINTS	ICI, ASIAN,DULUX, BERGER, NEROLAC, JOHONSON & NICOLSAN
1	ANTI CORROSIVE PAINT	TIKITAR, FINCOAT
2	RED OXIDE	ASIAN, DULUX,NEROLAC
3	POLISH	ASIAN MELAMINE
4	EXTERIOR PAINTS	DULUX WEATHERSHIELD OR APP. EQUIVALENT

5	ENAMEL PAINT	ICI, DULUX, ASIAN, NEROLAC
C	FALSE CEILING	
1	GYPSUM BOARD	GYPROC (SAINT GOBAIN)
2	FRAMING WITH COMPLETE SYSTEM	GYP STEEL ULTRA (SAINT GOBAIN), RAMCO FUJI
3	HILUX BOARDS	RAMCO OR APPROVED EQUIVALENT
4	MINERAL FIBRE TILES CEILING WITH COMPLETE SYSTEM	ARMSTRONG/SAINT GOBAIN/USG
D	APPROVE MAKE LIST FOR ELECTRICAL WORK	
1	PVC rigid conduits & Accessories:	1.5 mm thick (MMS) ISI and FIA approved - Precision / Vraj / Nihir / BLP / PFI / Anchor / Polycab make. (Only white coloured pipes FRLS type to be used.).
2	L.T. Cables:	Havells / KEI / Polycab / R. R. Kable / Finolex.
3	Wires (FRLS):	Havells / KEI / Polycab / R. R. Kable / Finolex.
4	Main Distribution Boards:	MDS Legrand (Lexic) / Hager / Crabtree XPOA / Schneider (Eazy 9) / L & T EXORA / C & S Wintrip / Siemens Bitaguard.
5	ELCB / RCCB / Miniature Circuit Breaker:	MDS Legrand (Lexic) / Hager / Crabtree XPOA / Schneider (Eazy 9) / L & T EXORA / C & S Wintrip / Siemens Bitaguard.
6	Switch gears:	MDS Legrand (Lexic) / Hager / Crabtree XPOA / Schneider (Eazy 9) / L & T EXORA / C & S Wintrip / Siemens Bitaguard.
7	Change Over Switch:	HPL Socomac/ Havells / L & T / Hager.
8	Domestic fittings:	.
	a) All Switching Modular Accessories.	MK Wrapped Wround Plus / Schneider Livia / L & T entis / Crabtree Verona / Salzer Elite / Legrand Myris / C & S Divino / SSK Ace.
	b) Holders / ceiling roses	Anchor or equivalent approved make.
	c) Adhesive Tape	Bhor (Steel Grip) or approved .
9	10 - 30 A Polycarbonate Socket & Top:	MDS Legrand (Lexic) / Hager / Crabtree XPOA / Schneider (Eazy 9) / L & T EXORA / C & S Wintrip / Siemens Bitaguard.
10	Telephone Wires / Cable:	Finolex / R. R. Kable / Havells / L & T / Polycab.
11	Telephone tag block:	Krone make.
12	Cable Lugs:	Dowell / Lotus / Jainson / 3 D.
13	Cable gland Single / Double Compression:	HMI / Comet / 3D.
14	Ammeter / Voltmeter:	AE / HPL/MECO/ Enercon make.
15	Selector switches:	L & T salzer / Kaycee make.

16	Indicator lamps:	LED type Teknic / Precifine/ Binay.
17	Connector strips:	Wago / Elmex make.
18	Lighting Fixtures :	Wipro / Philips / GE / Crompton. only
19	Exhaust fan (Light duty):	Khaitan / Crompton / Havells.
20	Ceiling Fan (5 star rated):	Crompton (High Breeze Plus) / Havells.
21	Wall mounted Fan (5 star rated):	Crompton (High Flow Wave) / Havells.
22	Data Cable - I / O Unit:	D - Link / Digi Link.



FIRST FLOOR PLAN

PROPOSED PLAN FOR:-
BARODA U.P. BANK, REGIONAL OFFICE, AZAMGARH

FIRST FLOOR CARPET AREA = 3200.00 SQFT

PLAN - 6

Ar. RAJESH KUMAR SINGH (B.Arch)

VISION ARCH

Plot no. 166, V.D.A. Colony, Badalapur
 (Chandmari) Varanasi M.No 9450165944
 E.MAIL:- VARCH0036@GMAIL.COM

**Detail Tender for Electrical work LAN Cabling work of Regional Office
Azamgarh**

Sl.No.	Particulars	Qty.	Unit	Rate/Unit Rs. P.	Amount Rs. P.
1.	S/F of plug socket board consisting of 3 plug 5 Amp, three pin, three switch and one indicator with 1.5 sq mm separate circuit wiring for computer .	21	No		
2.	S/F of UPS earthing-S/burying of Dual pipe technology (Pipe in Pipe) earthingelectrode having GI 80mm O/D pipe with 25 micron coating. 3metres long. The space between two pipes to be filled with Highly conductive & Non corrosive chemical compound. The vacant space between pipe & hole shall also be filled with Compound all around. The job also includes S/F of GI strip clamp with two holes (with SS/GI bolts & nuts) on the electrode& taking two earthing leads of 4mm dia copper wire (Assumed length of 10m -beyond 10m to be paid extra) upto Main panel complete in all respects with guaranteed E/N voltage of less than 2 volts and resistance less tahn 1ohms. The 4mm dia Cu. earth wire shall be terminated on a separate 6way earthlink. The connections for Panel earthing& earth bus in the panle should be taken from this earthlink	3	No		
3.	Supplying and fixing recessed mounting fittings with suitable for 35/40 watt LED 600x600 Square fitting with PDC Aluminum die cast housing with poly Corbonet diffuser, in built electrical 110 LM Per watt protection like over voltage, short circuit, over loading, mis wiring for additional safety precaution rated light 50000 hours, (Guaranteed for above LED light is three month from period of installation) Make Crompton Cat No. LC'TLRNE-36-FO-CDL,LED 36W or Philips make Model No. 380 LED 42S DN (38 W) Wipro Cat- Garnet Slim LED D414065 (All complete with Lamps	30	No		

SL.No.	Particulars	Qty.	Unit	Rate/Unit Rs. P.	Amount Rs. P.
4.	S/W 10 Amp, Plug point with 2.5 sq mm copper wire in counter with continuous earthing wire complete in all respect with modular switches /socket.	26	No		
5.	S/F of LED Batten 20 watt light Fitting with 1.5 sq mm wiring complete in all respect including modular switches	10	No		
6.	S/F of 20 Amp plug point with 2.5 sq mm wiring including modular switches /socket with continuous circuit wiring.	20	No		
7.	Supplying and wiring for Telephone point with twisted annealed, copper conductor PVC insulated and PVC sheathed telephone wire with socket in 14 SWG with all the accessories in concealed manner with 2-pin socket in suitable size of MS box.	24	No		
8.	Supplying and fixing 4 WAY TPN DB Double door 1p43 With 10-32 amp SP MCB 10 KA & 63 AMP 4 POLE MCB For A.C	03	No		
9.	Providing & Fixing of wall fans & point complete with 1.5 Sq mm wiring and modular switches.	26	No		
10.	Supplying and fixing of Call Bell in RM's cabin including wiring etc.	01	No		
11.	Supplying and Fixing of cabin fans (400Dia) in cash cabin/ in 1.5 sq mm wiring and modular switches.	0	No		
12.	Supplying and Fixing of circuit wiring for computer in 2.5 sq mm copper wire.	20	No		
13.	Supplying and Fixing of wiring for lights and fans 1.5 sq mm copper wire complete in all respect.	20	No		

Sl.No.	Particulars	Qty.	Unit	Rate/Unit		Amount	
				Rs.	P.	Rs.	P.
14.	Supplying and Fixing recessed mounting fittings with suitable for 18/20 Watt LED down Light fitting with PDC Aluminium diecast housing with Poly Carbonet diffuser, in built electrical protection like over voltage, short circuit, over loading, mis wiring for additional safety precaution rated light 50000 hours, (Guaranteed for above LED light is three month from period of installation) Philips make DN195BLED 20F (20 WATT) 6500 KA < Crompton Cat No. LCBE18 – CDI- 18 Watt & Wipro cat- Gernot slim Ø7112060/40/30 6500 KA (complete with all)	42	No				
15.	S/F of A.C. point wiring with 2x 4 sq mm-1x1.5 sq mm copper wire and metal socket MCB 20 Amp. complete For 1.5 Ton/	18	No				
16.	Supplying and Fixing of exhaust fan in toilet/hall 15 Inch dia 1.5 sq mm wiring and modular switches.	2	No				
17.	S/F of ceiling fan (1200 dia) with hooks in rooms with adding rod of suitable length wherever necessary including 1.5 sq mm wiring and modular switches and regulator	2	No				
18.	S & F of 12 way SPN DB double door with 10No SP MCB and 1 no DPMCB 40 AMP for computer	2	No				
19.	Supplying and fixing 4 WAY TPN DB Double door IP43 With 10-32 amp SP MCB 10 KA & 63 AMP 4 POLE 100 MA RCCB For light, Fan & Supply complete	1	No				
20.	Sub main wiring of UPS input and UPS output power supply with 2 no 6 sq mm No. 4 sq mm copper flexible wire in PVC conduit pipe. (payment as/actual length on site)	60	Mtr				

Sl.No.	Items of Work	Qty.	Unit	Rate/Unit Rs. P.	Amount Rs. P.
21.	Sub main wiring of power supply from Main to TPN distribution Board with 4 nos 10 sq mm copper flexible wire and 1 no 6 sq mm earth wire in PVC conduit pipe. (payment as/actual length onsite)	65	Mtr		
22.	Supplying / Fabricating / installation of Panel Board made of 16 gauge CRC sheet 415 V Incoming: TPN MCCB 250 Amp _1 No 36 KA (4 pole) Out going 100 Amp MCCB 4 pole -3 no 250 Amp Change Over 4 pole _ 1 No 63 Amp Change Over for ups _ 1 no and 63 Amp 4 Pole MCB - 1 no With Double Bus Bar Chamber Complete with metering system	1	Set		
23.	Supply and fixing of Main line cable work from pole to DB in hall with 50sq mm x 3½ core cable with wiring. (Length to be as/site condition)	45	Mtr		
24.	Supply and fixing on board 3 no KIT KAT cut out 200 amp with neutral link on board	1	Job		
25.	S/F of ceiling fans (1200 dia) with hooks in rooms with adding rod of suitable length wherever necessary including 1.5 sq mm wiring and modular switches and regulator	0	No		
26.	S/F of light point (LED light 9 watt) in 1.5 sq mm wiring complete in all respect include modular switches.	10	No		
LAN Cabling					
27.	Supplying and drawing CAT 6 PVC insulated and Sheathed LAN cable through PVC conduit including testing, commissioning etc.as required.	1225	Mtr		
28.	Supply and fixing of RJ modem Jack for computer including making connection, soldering etc	24	No		

29.	Supply and Fixing of Patch Card with CAT 6 Jack	24	No		
				Total Rs.	

GST18% -----

GRAND TOTAL -----

(Rs. ----- Lacs ----- Thousand ----- Hundred ----- Only.)

**Schedule of Quantity Tender for Side Unit & Table work of Baroda U.P. Bank Regional
Office Azamgarh**

S.No.	Items of work	Qty	Unit	Rate	Amount
1.	<p>Providing and Fixing in position</p> <p>Side Units & Made out of 19mm board with 1.0 mm Laminate with slidding hinged shutters (made out of 12mm thick ply with 1.0 mm Thick laminate on it) complete with handles</p> <p>Etc. Size 4'-0" x 1'-6" x 2'-6"</p>	4.0	No.		
3.	<p>Providing and fixing in position Confrence</p> <p>Hall Table made</p> <p>Out of 19mm thick water proof board with 1.0 mm th. Laminated on all exposed surface (others external surface shall be painted with Two coats of enamel paint over one coat of Primer) It shall have one unit on one side while Provision to be made for pull out tray on slides. The table to be finished in TW/H.W Lipping & Godrej lock, handles footrest, latches all Complete.</p>	68	Rf		
4	<p>Providing and fixing in position Regional Manager Table (Size 8'-0" x 3'-0") made</p> <p>Out of 19mm thick water proof board with 1.0 mm th. Laminated on all exposed surface (others external surface shall be painted with Two coats of enamel paint over one coat of Primer) It shall have one unit on one side while Provision to be made for pull out tray on slides. The table to be finished in TW/H.W Lipping & Godrej lock, handles footrest, latches all Complete.</p>	1.0	No.		

5. P/F of Low Ht.(4'-6" High) Laminated Portion for **UPS** Space the Under Framing shall be of 2"x2"sal wood (Anti termite Treatment) for under frame in at a max. distance 2'-0" in each direction. 6 mm th. Waterproof Ply shall be fixed on two side & 1.0mm thick laminated shall be pasted over its with Chemical adhesive

90.00 sft

6. Providing and Fixing in position **Officer**

Table (Size 5'-0"x2'-6")made out of 19mm.

Thk. Water proof board with 1.0 mm. th.

Laminated on all exposed surface (others external

Surface shall be painted with two coats of enamel

Paint over one coat of primer) It shall have one

Unit on one side while.

3.0 No.

7. Providing & fixing wooden **Filling Cabinet**

1'-6"deep to be fixed on the wall frame made out of 19mm thick commercial ply with siding hinge shutters made out of 12mm thick ply with 1.0mm laminate on the front & side other other internal surface to be painted as complete with handle, lock, wall catches etc.

230.00 sft

Total Rs. -----

GST 18% -----

GRAND TOTAL

(Rs. ----- Lacs ----- Thousand ----- Hundred Only.)

**Schedule of Quantity Tender for Wall Paneling & False Ceiling work of Baroda U.P. Bank
Regional Office Azamgarh**

S.No.	Items of work	Qty	Unit	Rate	Amount
1.	Providing and fixing / Wall paneling	1950.00	Sft.		
2.	False Ceiling (Armstrong) Providing and fixing in position false ceiling in armstrong 600 x 600 x 15/16 mm dunc supreme RH 99 prima tile with regular edge frame work as specified by Armstrong company with suspenders making necessary frame work for A.C. Ducting for diffusers and light fitting.	1800.00	Sft.		
3.	False Ceiling (Gypsum) Providing & fixing with necessary scaffolding frame in 22 gauge GI channel /angle, placed at appropriate grid, fixed to RCC slab, beam, wall etc. with fasteners/screws finished with 12.0mm Gypsum sheets joints covered with POP slurry /tape. Rates shall include painting (One Coat of putty, one coat of primer coat and tow coats of acrylic paints.) Rates shall include providing necessary cut-outs & additional support frames for electrical fixtures, A.C. grills, vertical drop up to 1'6" etc. item includes finishing with painting base work and finishing in plastic paint				

of white colour. (Note:- No extra payment shall be given
for design. However, the visible area of the vertical side
at the intersection of Gypsum & Armstrong
False ceiling shall be paid.)

1400.00 Sft.

Total Rs.

GST 18% -----

GRAND TOTAL

(Rs. ----- Lacs ----- Thousand ----- Hundred Only.)

**Schedule of Quantity Tender for Wooden Partition & Entrance Door work of Baroda U.P.
Bank Regional Office Azamgarh**

S.No.	Items of work	Qty	Unit	Rate	Amount
1.	P/F 1.5mm Thk. PVC Flooring	2800.00	Sft		
2.	P/F of Full Ht.(8'-6'')&Low Ht.(4'-6'') High) Partly glazed Laminated Portion in Regional Manager/ R.O. Dept. Cabin &Other Partition the Under Framing shall be of 2"x2" sal wood (Anti termite Treatment) for under framing at a max. distance 2'-0" in each direction. 6 mm th. Waterproof Ply shall be fixed on two side & 1.0mm thick laminated shall be pasted over its with chemical adhesive Provision shall be made molding melamine Polished shall be fixed Wherever necessary bottom 4" width shall have 5mm th. Plane glass	2090.00	sft		
3.	Low ht. Counter 2'-6" wide made out of 19mm thick board with drawer unit and front side 12mm thick Etching Glass Supported with Teak wood or Aluminum member With 1.0 mm thick laminate on the top & Drawer unit shall be provided on one side while with space for CPU by its side pull out tray on slide shall be provided on each counter for keeping keyboard. all the exposed edges shall have 6 mm. TW lapping duly polished inside surface shall be enamel painted two coats over primer coats. It shall be locks & handles etc. provision for wire management shall be made. Complete work as per branch Manager/ Architect Satisfaction.	76.00	Rft		
4.	Providing and fixing Column/Wall paneling Paneling all specification as per item no. 2	175.00	Sft.		
5.	Providing and fixing in position double leaf Powder coated Aluminium entrance door Made of 14 guage thick sheet. All member Shall be of 4"x1-3/4" section and bottom Rail shall be of 5"x1-3/4" section with 6mm				

Thick clear sheet glass including 4'' dia 2.0
Nos handles 10'' long 2.0 Nos, Tower bolts,
Floor spring 2.0 Nos lock etc. complete.

115.0 Sft.

Total Rs. -----

GST 18% -----

GRAND TOTAL

(Rs. ----- Lacs ----- Thousand ----- Hundred ----- Rupees Only.)