

TENDER NOTICE

Baroda U.P. Bank, Regional Office Faizabad, intends to invite Tenders from bonafide empanelled contractors for the proposed interior work of **DEORIYA BUZURG** Branch at Ambedkarnagar, U.P. as per enclosed Offer Bid/BOQ proforma.

The completion period of work will be 30 days from the date of issue of order. The work shall be executed under the supervision of our consulting Architect and as per specifications demonstrated in Offer Bid proforma/BOQ.

Offer Bid proforma/BOQ is attached with this notice. Offer should be valid for a minimum period of -120- days from the last date of submission. No brokerage shall be paid. The sealed covers marked as Bid superscribing "**FURNISHING WORK BID FOR DEORIYA BUZURG BRANCH**" be put in one sealed cover/packet addressed and submitted to The Regional Manager, Baroda U.P. Bank, Regional Office- Faizabad, Baldev Niwas Compound, Acharya Narendra Dev Nagar, Reidganj, Faizabad, U.P.-224001 within 15 days from the day of publication of this advertisement / on or before 16.03.2023 by 17.00 hrs.*

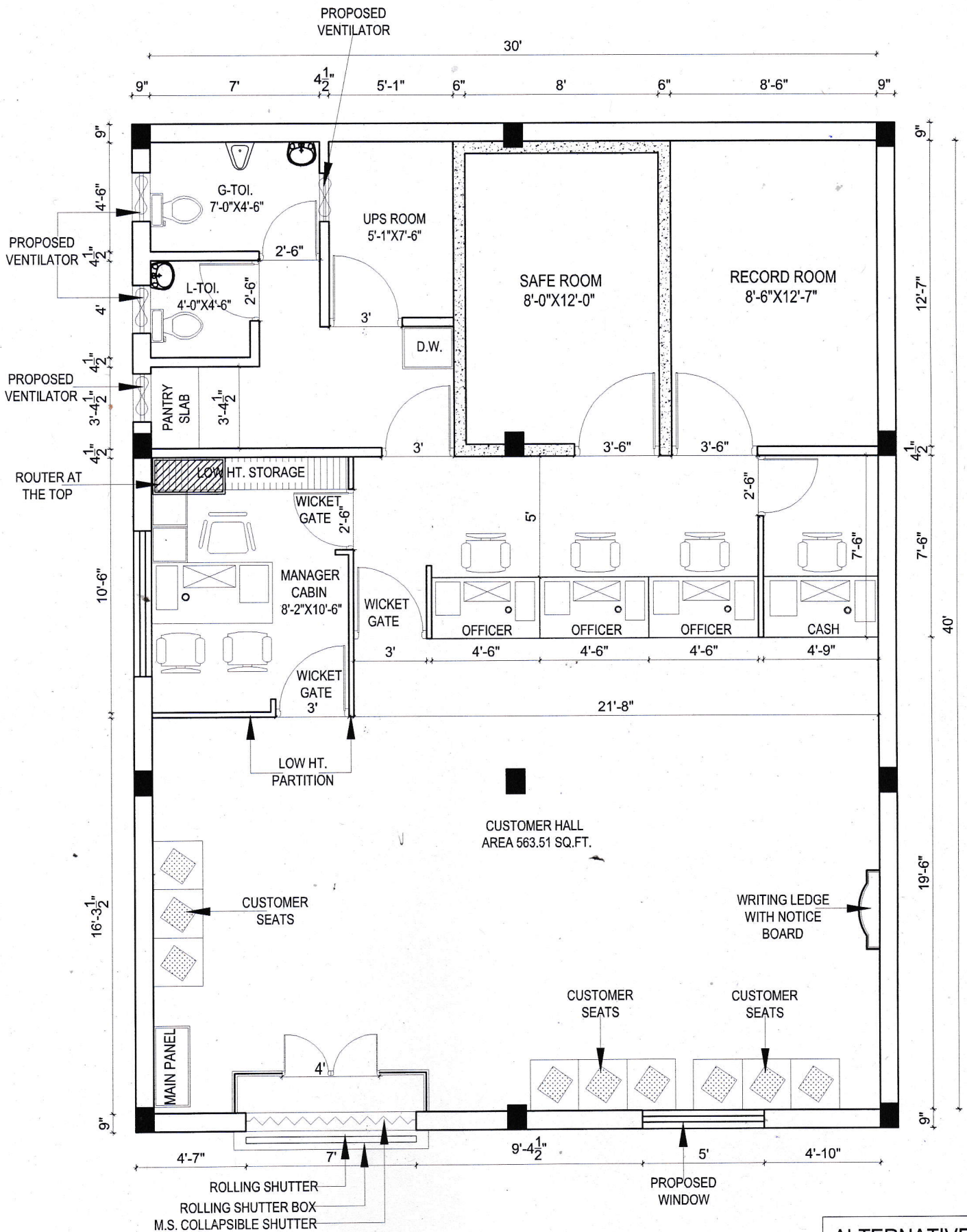
Any decision taken by Bank at any point of time in connection with this process shall be final and conclusive and no claim or dispute from any quarter in that regard shall be entertained.

Date-02-03-2023

Attached: Offer Bid Proforma


Regional Manager





ALTERNATIVE-1

DRG. TITLE:-

LAYOUT PLAN FOR
BARODA U.P. BANK
BRANCH AT, DEORIYA BUZURG,
REGION - FAIZABAD.

Drg. Title

LAYOUT PLAN

North

Date

APRIL-2022

Drawn By

GUNJAN & ASSOCIATES

ARCHITECTS, ENGINEERS, INTERIOR
AND LANDSCAPE DESIGNERS.
141, SAINIK NAGAR, LANE NO-9 RAEBARELI ROAD
LUCKNOW-226002

Phone: +91 9839018489, 9838818489

E-mail:- arunjan@yahoo.com

E-mail:- studio@gunjanandassociates.com

Web:- www.gunjanandassociates.com

Gunjan and Associates
Architects, Engineers, Interiors
& Landscape Designers
141, Sainik Nagar, Raibareilly Road, Lucknow-226002
Phone: 0522-3553324, 9838818489
E-mail: studio@gunjanandassociates.com
URL: www.gunjanandassociates.com

Bill of Quantity for Furnishing works for Baroda U.P. Bank

Branch at Deoriya Buzurg


Region - Faizabad

- 1.No offsite prefabrication shall be allowed in any case. All fabrication shall be done at the site after getting the materials inspected by the architect
- 2.No payment shall be made for any in completed or unsatisfactory work
- 3.The Contractor should strictly follow the Booklet requirements of the Bank including the detailed drawings in the booklet. Any discrepancy between the booklet and the Specifications below should be brought to the notice of the Architect.
4. List of material to be strictly as per the booklet.
5. Cable Managers to be provided in the tables and Counters wherever required.
6. All underframe should be properly treated with antitermite and waterproofing material
7. All Locks in the drawers and doorsets should be of Godrej
8. All keyboard Trays and Drawers to be on Channel Sliding Mechanism.
- *The contractor to follow the banks colour Coding. Any other specified colour to be superceded by the Banks Colour code.
- *All board to be BWP. Of approved brand and if written BWR it should be superceded by BWP board/ply.

S.No.	Description of item	Unit	Qty.	Rate	Amount
1	Branch Manager Table with Side Table.	NOS.	1.00		
	Size -5'-6" (L) X 2'-6" (W) X2'-6" (H) Side table 3'-0"X2'6" Providing and placing in position table made of phenol bonded 19mm thick commercial board with top front and sides finished in 1.0 mm Thick laminate and 12mm thick toughened glass on top. The front facade of the table to have 6 mm thick and 29 mm wide moulding. Every table shall be provided with a key board, drawer, and a cabinet with a shutter below W-375mm, H-750mm, Depth- 500mm. The storage unit shall consist of provision for C.P.U. 600X250 size Keyboard to be made of 19 mm thick commercial board and finished Drawers and a cabinet with a shutter below W-375mm, H-750mm, Depth-500mm. shall consist of 12 mm thick commercial board for bottom, sides and back of 19 mm thick phenol bonded commercial board with laminate in front and shall slide on tray system provision (sliding mechanism).				
	All the units shall be provided with all the necessary hardware as approved by the Architect. such as knobs, handles, etc. All unexposed surfaces to have two coats of synthetic enamel paint with primer and base, all complete, specifications and directions of the engineer in charge.				
2	Cash Cabin Partition (HT-7'-0" ONLY)	Sq.ft.	175.00		

	Providing and fixing of Cash Enclosures at height of 7'-0" with Anodized aluminium frame work, heavy sections (2mm thickness) of 2"x1.5", spacing of 2'-0"x2'-0" on bothsides and covered 6mm thick BWP plywood finished with 1mm thick laminate of approved colour. Partition shall have provision for opening and 19mm BWP plywood tray for challan receiving purpose. Cost include aluminium grill and fixed with teak wood beading and duco paint. Cost also include 3 Nos of Solid core flush Doors with sizes of 2'-6"x7'-0", fixed in the partition. Door shall have teak wood beading and lipping with duco paint. Door finished with 1mm thick laminate of approved colour for skirting of approved pattern. Door shall have 8mm glass fixed with teak wood beading and duco paint. Rate to include hardware's like brass hinges, godrej three nos of night latch, door closure, door stopper and handles. Cost also include cash transaction opening shall be provided with door arrangements made with BWP plywood frame work finished by laminate, duco paint and locking system. Cost include wastages, transports, loading, unloading charges, labours, materials, tools, lead, lift and etc. Complete as per drawings and instructions of the Architect.				
	Decorative Grill (12mm thk)-hexagonal opening as per instruction of Bank's Engineer/Architect.) All exposed edges of Plywood shall be fixed with 1/8" C.P. Teak Lipping.				
3	Cash Counter	Rft.	5.00		
	Bank counter of approved design for cashier made of 19.00 mm commercial block board and mica 1.00 mm thick of approved brand and colour on front customer top and writing desk. Height of counter from customer side 114cm (45"). width of writing desk 75cm.(30") with provision of cupboard after every 1.20 mts made of 19.00 mm block board with 1.0 mm sunmica pasted on both side (inner and outer), and teakwood beading complete with quality polish finish. Mica pasted on both sides external & internal including all locks & handles with door closer .				
4	Front Counter	Rft.	17.00		
	Front counter made of 19.00 mm block board with table top at the height 75 cm and 80 cm wide sunmica 1.0 mm on top and cup board and sliding key board with provision of fixing of glass in front. Mica pasted on both sides external & internal including all locks & handles				
5	Cash Cabin-Aluminium Grill Top with teak Decorative Grill Partition).	SQFT	45.00		
	Providing and fixing of Aluminum grill work in cash counter top with all nessecary fixing support of 'L', 'H' and 'C' aluminium sections and etc. Cost include 'L', 'H' and 'C' aluminium sections, hardwares, tools, wastages, lead, lift, labour charges, loading, unloading charges, cutting, transport and etc. Complete as per instructions of the Architect.				
6	12 mm Glass on Front Counter & Cash Counter	Sq. ft.	55.00		
	12 mm float glass with rounded edges with etching as per the requirement of bank for Front counter (Height: 60 cms) (With teak wood frame 70 cm).				
7	Low Height Partition up to 4'-6" ht. glazed/Unglazed partition	Sq.ft.	125.00		

	Half Height partition to be made with Anodized Aluminium frame work, heavy sections (2mm thickness) of 2"x1.5" sections, spacing of 2'-0"x 2'-0" on bothsides and covered with 9mm thick BWP plywood finished with 1mm thick laminate of approved colours for skirting & borders and white colour laminates for base on both sides with all necessary fixing accessories, arrangements and etc. Partition shall be block partition till 3' ht. and 1'-6" glazing. It shall have 12mm thick etched glass and fixed with teak wood beading with melamine polish. Clear glass shall be finished with frosted film sticking over the glass of approved pattern and design. Rate to include providing cutouts and provisions to run electrical conduits, switches, etc. Cost include wastages, transports, loading, unloading charges, labours, materials, tools, lead, lift and etc. Complete as per drawings and instructions of the Architect.				
8	Storage (Low/Full Height/Over Head)	Sq.ft.	90.00		
	Size-2'-6" highX 1'-6" deep				
	Size-8'-6" highX 1'-6" deep				
	Ply Wood -19.0mm thick board for side top and door & back 6.0mm IS 303 with shutters, shelf 19.0mm ply				
	Shelf -19.0mm thick MR Grade IS303 ply				
	Handle -Brush finish stainless steel				
	Lock -Vijayan/Godrej				
	Internal surface zinc oxide polish and other required accessories instructed by Bank's Engineer / Architect.				
9	Column / Wall Panelling	Sq.ft.	155.00		
	Providing & fixing in position 2"x 2" kailwood frame and finished with 6 mm thk. Commercial ply on both sides with 1.0 mm thk. Laminate on top as per instruction of the Architect. column panelling only 8.5' height				
10	Notice Baord	No.	1.00		
	Notice Board made of 19.00 mm board (size: 3'-0"x3'-0") laminated sides and covered by good quality Cherry Colour Velvet with attached Cheque Writing Desk (6"x6"x9") with attached Two Battens for Support, Sunmica Pasted on all sides.				
11	Writing Desk Including Suggestion Box and Cheque Drop Box	No.	1.00		
	Writing ledge of 19 mm Phenol bonded board as/design on 19 mm thick with pockets for slips of 6mm glass machine polished with seperators completed to the satisfaction of the architect and the Drawing. The Writing ledge includes a Suggestion box below, cheque drop box and a notice board above complete to the satisfaction of the Architect.				
12	Hydraulic Door Closure. (to be Godrej)	No.	1.00		
	Providing and fixing of hydraulic door closure (Make-Godrej, Product Code-4539 or equivalent) for doors. It shall incorporate the following –				
-	Body manufactured from Aluminium extruded alloy machined to extreme accuracy.				
-	Rack and Pinion-made of machined alloy steel duly heat-treated.				
-	Adjustable closing speed.				
-	Suitable for right hand and left hand opening doors.				
-	Suitable for door / frame mounting.				

-	Suitable for door weight up to 60 kgs.				
-	Suitable for 180 / 100 degree door opening.				
	All complete to the satisfaction of the Architect.				
13	Night Latch Locks.	Nos.	1.00		
	Providing and fixing of night latch locks (Make – Godrej, Product Code - 9954 or equivalent) for Cash Cabins. It shall incorporate the following –				
-	7 brass – lever with mechanism that deadlocks.				
-	Suitable for right handed or left handed, inside or outside opening doors.				
-	Safety catch to prevent entry even by key from outside.				
-	A special safety provision to prevent accidental lock out.				
-	Scratch resistant powder - coated finish.				
	All complete to the satisfaction of the Architect				
	Total Amount				
Note: All rates are excluding G.S.T.					
<div style="text-align: right;"> For GUNJAN & ASSOCIATES  <small>(AR. GUNJAN KAPUR) PROPRIETOR</small> </div>					
Ar. Gunjan Kapur					
for Gunjan & Associates					