

Gunjan and Associates
Architects, Engineers, Interiors
& Landscape Designers

141, Sainik Nagar, Raebareilly Road, Lucknow-226002

Phone: 0522-3553324, 9839018489, 9838818489

E-mail: studio@gunjanandassociates.com

URL: www.gunjanandassociates.com

Abstract of Cost for Baroda U.P. Bank

at Administrative Office, Bargad Chauraha, Raibareilly.

S.No.	DESCRIPTION	AMOUNT (Rs.)
1	FURNISHING WORKS, ELECTRICAL & DATA CABLING WORKS AND AIR CONDITIONING PIPING WORKS	
	TOTAL (A+B+C)	

Note: All rates are excluding G.S.T.

For GUNJAN & ASSOCIATES

(Ar. GUNJAN KAPUR)
PROPRIETOR

Ar. Gunjan Kapur

For M/s Gunjan & Associates

Gunjan and Associates
Architects, Engineers, Interiors
& Landscape Designers

141, Sainik Nagar, Raebareilly Road, Lucknow-226002

Phone: 0522-3553324, 9839018489, 9838818489

E-mail:studio@gunjanandassociates.com

URL:www.gunjanandassociates.com

Bill of Quantity for Furnishing, Electrical and Air Conditioning Piping works for Baroda U.P. Bank

at Administrative Office, Bargad Chauraha, Raibareilly.

1.No offsite prefabrication shall be allowed in any case. All fabrication shall be done at the site after getting the materials inspected by the architect

2.No payment shall be made for any in completed or unsatisfactory work

3.The Contractor should strictly follow the Booklet requirements of the Bank

including the detailed drawings in the booklet. Any discrepancy between the booklet and the Specifications below should be brought to the notice of the Architect.

including the detailed drawings in the booklet. Any discrepancy between the booklet and the Specifications below should be brought to the notice of the Architect.

5.Cable Managers to be provided in the tables and Counters wherever required.

6.All underframe should be properly treated with antitermite and waterproofing material

7.All Locks in the drawers and doorsetc. should be of Godrej

8.All keyboard Trays and Drawers to be on Channel Sliding Mechanism.

9.Etching to be provide as per Banks Design and Specification.

S.No.	Item	Units	Qty.	Rate	Amount
	In case of full height partitions measurement of height shall be taken from the finished floor level upto the level of the false either side of the partition ceiling,in case of varying heights on average height shall be considered.				
	The rate to include provision of extra framework as necessary for skirting & making provision for laying conduit as/drg & directions of site engr./architect.All underframing to be treated with antitermite solution chlorpyrifos based in recommended dilution.				
1	Full height glazed/Unglazed partition including door as per design All partitions to have etching/3M film as per the design of the Architect.	Sqft	1570.00		
	Glazed Partition (upto false ceiling height only considered and above necessary ceiling supports to be provided) with Anodized Aluminium frame work, heavy sections (2mm thickness) of 2"x1.5" section, spacing of 2'0"x2'0" on bothsides and covered with 9mm thick BWP plywood of standard make finished with 1mm thick laminate of banks colours for skirting & borders on both sides and approved colour laminate for base colour on both sides. Above 1'0"/2'6"/3'0" height partition, fixed with 8mm toughened glass with etching/ film of 3M as per design and teak wood beading of size 1.5" /0.5" with melamine polish. Rate to include providing cutouts and provisions to run electrical conduits, switches, etc.Cost include wastages, transports, loading, unloading charges, labours, materials, tools, lead, lift and etc. Complete as per drawings and instructions of the Architect.				
	The job shall also include for provision of laying conduits, switch boxes etc. The erection of partition shall include for expansion bolts cleats, clamps bolts, nuts, screws, rivets and other accessories, all complete up to the satisfaction of the Architect.				

	The partition and doors shall have hinges floor springs /sliding arrangement / hydraulic door closer, mortise locks with handle set (Godrej, Dorma make all), etc. The rate shall include cost of all materials, labour, T&P, wastages, etc. required for proper completion of work, all complete to the satisfaction of the Architect.				
	Full height Solid partition (height 8'-6"or ceiling height) with Anodized Aluminium frame work, heavy sections (2mm thickness) of 2"x1.5" sections, spacing of 2'0"x2'0" on bothsides and covered with 9 mm thick plywood finished with 1mm thick laminate of approved colour for skirting & borders and laminates for base on both sides with all necessary fixing accessories, arrangements and etc. Partition shall have necessary opening of approved size as per standards for fixing machine' s and additional frame to be fixed for strengthening the partition. Rate to include providing cutouts and provisions to run electrical conduits, switches, etc. Cost include wastages, transports, loading, unloading charges, labours, materials, tools, lead, lift and etc. Complete as per drawings and instructions of the Architect. This would include provision of teak wood chaukhat for provision of semi glazed glass door with logo of Bank				
2	Low Height Partition. Block partition till 3'-0" and glazing from 3'-0" to 4'-6". Glazing to be toughened etched/3M film.	Sqft	563.00		
	Half Height partition to be made with Anodized Aluminium frame work, heavy sections (2mm thickness) of 2"x1.5" sections, spacing of 2'0"x2'0" on bothsides and covered with 9mm thick BWP plywood finished with 1mm thick laminate of approved colours for skirting & borders and white colour laminates for base on both sides with all necessary fixing accessories, arrangements and etc. Partition shall have 12mm thick etched/3M film glass and fixed with teak wood beading with melamine polish. Clear glass shall be finished with frosted film sticking over the glass of approved pattern and design. Rate to include providing cutouts and provisions to run electrical conduits, switches,etc.Cost include wastages, transports, loading, unloading charges, labours, materials, tools, lead, lift and etc. Complete as per drawings and instructions of the Architect.				
3	Main Entrance Door Toughened with Toughened Fixed Glazing	Sq.Ft.	106.00		
	Provoviding and fixing of door with side panel with 12 mm toughened glass complete with Ozone Patch fittings including Top Patch (OPF-02)Bottom Patch(OPF-3)Angle Lock(OPL-1)Top Pivot (OFS-ACC-GDP)Floor Spring (FS8400)and handle(OGH)32x457				
4	Storage (Full Height / Low Height) /Over-Head storage	Sqft	306.00		
	Providing and fixing Full height/ (Low Height) /Over-Head storage e 400mm deep made out of 19mm BWP block board finished with 1.0mm laminate in allexposed areas. The drawers to be made out of 19mm BWP block board in the front cladded with 1.0mm laminate (color, vertical grain). sides to be made out of 12mm BWP plywood and bottom made out of 6mm BWP plywood duly painted in matching tone and it should play on drawer sliding channels.The shutters to be made out of 19mm BWP block board and should play on drawer sliding castors on powder coated channels. The necessary locks, handles, etc to be provided. Inside of the unit to be enamel painted in matching tone. All the exposed edeges of the boards/plywoods to be coverd with wooden lippings/mouldings duly polished all complete.The work to be completed as per approval and specifaicon of the Architect.				
	Handle-Brush finish stainless steel as per IS				
	Lock- Godrej				

	Internal surface zinc oxide polish and other required accessories instructed by Bank's Engineer/Architect.				
5	D.G.M. Table with side table with 12 mm thick bevelled glass on top.	No	1.00		
	Size-8'-0" X 3'-0" X 2'-6"				
	Providing Table in position, Top shall be made of 19mm thick BWP comm. Board finished with 1.00mm thick laminate 1 3/4" x 1" teak wood beading as per design on all sides. The sides shall be made of 19mm thick BWP comm. board finished with 1.00mm th laminate as per design. with teak wood lipping on all exposed ends of sides The front apron shall be made of 19mm thick BWP comm. board finished with 1.00mm thick laminate as per design The drawers to be made out of 19mm thick comm. BWP board duly laminated in the front, sides to be made out of 12mm BWP comm. plyw and bottom to be made out of 6mm BWP comm. ply and it should play in drawer sliding channels. The inside of the drawer and the table to be duly paint. laminated. A legrest to be provided duly paint made out of 3"x2" thk wooden section. A shutter to be made by 19mm BWP comm. board clad with 1.0 mm laminate. The necessary locks handles to be provided in each drawers and shutters. On top of the Branch managers table 12mm thk glass to be placed duly edge polished. The table should have key board tray and tea tray duly finished with 1.0 mm laminate. The necessary wire managers to be provided on the tables and provision for lights to be kept if required in the front of the table. (One coat of Ant termite treatment oil)				
	Side Table-4'-0" X 2'-6" X 1'-6"				
	Ply Wood-19.0mm thick BWR				
	Supports-2" X 2" & 2" X 1.5" CP Teak Wood and beading Patti				
	Drawer-1'-6" wide two drawers and one shutter below the drawers at left side of the table and two drawers at side table and below two shutters				
	Laminate-1.0mm thick approved colour				
	Key Board Tray-Metal INNOFIT make				
	CPU Metal Stand, Twin Telescopic Drawer Fittings, Brass Powder Coated Wire Manager				
	Handle-Brush finish stainless steel, Brass Ball Catches 12.0 thick plain glass with edge polish at top of the table (Other Exposed Edge of Ply with half round beading with approved colour polish)				
6	A.G.M. Table with side table with 12 mm thick bevelled glass on top.	No	1.00		
	Size-8'-0" X 3'-0" X 2'-6"				
	Other specifications as above				
7	C.M. Table with side table with 12 mm thick bevelled glass on top.	No	2.00		
	Size -5'-6" X 2'-6" X 2'-6"				
	Other specifications as above				
8	Officer Table with side table with 12 mm thick bevelled glass on top.	No	18.00		
	Size-5'-0" X 2'-3" X 2'-6"				
	Side Table-3'-0" X 2'-6" X 1'-6"				
	Other specifications as above				

9	Reception Table and including 12 mm thick glass on top.	No	1.00		
	Size-5'-0" X 2'-0" X 2'-6" / as per design				
	Other specifications as above The table to be in two levels, one at 2'-6" and the other at 3'-3" with 12mm thick glass top bevelled complete in all respect.				
10	CONFERENCE TABLE (as per design)	Rft	97.00		
	Providing and fixing in position confererence Table of size as per drawing complete in all respects made of 19 mm commercial board BWP laminated with 1 mm thick laminate all exposed edges of table top & ply verticals to have 1"x1/4" T.W. lipping. All exposed T.W. sections to be melaminated and internal Surfaces to have white enamel paint / Liner laminate as directed. Item to include plywood boxing, all necessary hardware and fittings in Stainless Steel finish, lipping to all edges etc. complete in all respects.				
11	False Ceiling Works (Gypsum)	Sqft	2480.00		
	Supplying and Erecting Saint Gobain Gyproc Gypboard false ceiling at different heights with saint gobain framework of G.I. Section (of medium thickness) of spacing 4'0"x2'0" above with 12.5 mm gypboard shall be fixed with all necessary fixing accessories, arrangements and etc. Rate shall include cut-outs for lights, ac and etc. The ceiling shall be putty finished and sanded to form clean and homogeneous surface. Cost include hidden lighting arrangements and etc. Rate to include painting two coats of acrylic emulsion of approved colour after necessary preparation, one coat of primer, full putty and tc. Cost include all necessary hardwares like nails, screws, wastages, transports, loading, unloading charges, labours, lead, lift, materials, tools and etc. Complete as per drawings and instructions of the Architect.				
12	False Ceiling (Armstrong)	Sqft	1008.00		
	False ceiling - 2 Grid false ceiling- Providing and fixing Saint gobain tile Grid ceiling of (GYPROC SAINT-GOBAIN Mineral fiber ceilings of 'CELOTEX PIN' board with "Narrow Reveal edge Corner bevel" 14mm grid (Bolt Slot) section) and (ARMSTRONG "CLASSIC LITE RH99" tile with "BEVELLED TEGULAR Suprafine 15 mm /Silhouette grid section) in aluminium powder coated sections supported from ceiling (4'0"x4'0" grid for support rods) with necessary GI framework of every 2'0"x2'0" grid junction, proper levelling and finished of the joints & top surface as per manufactures specifications and all accessories, arrangements and etc. All edges shall be perfectly straight. Tile shall be carefully laid with neat arrangements like hand gloves and etc. Cost include replacement of damaged or stained tile. Cost include all necessary hardwares like nails, screws, wastages, transports, loading, unloading charges, labours, lead, lift, materials, tools and etc. Complete as per drawings and instructions of the Architect. MAKE- SAINT GOBAIN and ARMSTRONG.				
13	Designer MDF board false ceiling/ Coloured ACP Sheet with CNC Cutting and backing of Acrylic/ Metlam, Equivalent as per direction of the architect.The support system to be as above.	Sqft	454.00		
14	Vertical Blinds	Sqft	315.00		
	Providing & fixing MARVEL/Vista make as approved by Bank's Engineer/Architect with runner, thread and other accessories				

15	Notice Baord	No.	2.00		
	Notice Board made of 19.00 mm board (size: 3'-0"x3'-0") laminated sides and covered by good quality Cherry Colour Velvet with attached Cheque Writing Desk (6"x6"x9") with attached Two Battens for Support, Sunmica Pasted on all sides.				
16	PLANTER BOX	Nos.	5.00		
	Providing and placing in position planter made of phenol bonded 19 mm thick commercial board with top front and sides finished in 1.0 MM Thick laminate including GI trough with sand and riverbed pebbles filling and artificial plants as per the approval of the architect of not less than Rs.750. The design of the grooves shall be as per detailed drawing and complete as per Architects direction.				
17	Column Pannelling & wall panelling Branch	Sqft	1632.00		
	Column Panelling -upto false ceiling height only considered and above necessary ceiling supports shall be provided) with Anodized Aluminium frame work, heavy sections (2mm thickness) of 2"x1.5", spacing of 2'0"x2'0" on bothsides and covered with 9mm thick BWP plywood finished with 1mm thick laminate colours for skirting & borders,. Rate to include providing cutouts and provisions to run electrical conduits, switches, etc. Cost include necessary hardwares likeclamps, screws and etc. Cost include provisions for electrical db closing 19 mm BWP plywood door arrangements, wastages, transports, loading, unloading charges, labours, materials, tools, lead, lift and etc.Complete as per drawings and instructions of the Architect.				
	Wall Panelling-upto false ceiling height only considered and above necessary ceiling supports shall be provided) with Anodized Aluminium frame work, heavy sections (2mm thickness) of 2"x1.5", spacing of 2'0"x2'0" on bothsides and covered with 9mm thick BWP plywood finished with 1mm thick laminate colours for skirting & borders,. Rate to include providing cutouts and provisions to run electrical conduits, switches, etc. Cost include necessary hardwares like clamps, screws and etc. Cost include provisions for electrical db closing 19mm BWP plywood door arrangements, wastages, transports, loading, unloading charges, labours, materials, tools, ead, lift and etc. Complete as per drawings and instructions of the Architect.				
18	Sofa (Per Seater)	NOS	23.00		
	Providing and placing of sofa, Material: Base Frame -Dymetrol stretchable fabric (100 S)- M.S. pipe -Legs made from Rubberwood- P.U. Foam (Hardness 20, Density 45 kg/ cubic m) - 18 mm thick partical board Armrest -Lining cloth cover placed on moulded P.U. Foam. (Hardness 20, Density 45 kg/cubic m)- M.S. pipe- Recron fibre (200 grade-chemical bonded)Backrest - Lining cloth cover placed on moulded P.U. Foam. (Hardness 14, Density 45 kg/cubic m) - M.S. pipe - Recron fibre (200 grade-chemical bonded) Seat - Lining cloth cover placed on moulded P.U. Foam. (Hardness 20, Density 45 kg/cubic m)- Recron fibre (200 grade-chemical bonded)				
19	Centre Table	No.	3.00		
	Providing and supplying in position centre table of length 2'-6"x2'-0" in 12 mm thk. Toughened glass in chamfer edge glass with diamond edge polish top placed on a base / pedestal made out of 12/19 mm BWP Ply boxes as per the drawing etc. finished with laminate complete.				

20	Shutter Boxing with A.C.P.	Sqft	145.00		
	Frame Work-2" X 2" X 1.5 mm thick Aluminium Tubular section (Horizontal/Vertical) Jindal Make				
	Aluminium Composite Panel-3.0mm thick of approved colour with bonding material				
	With trap door				
21	Meter Boxing with proper locking system, 2 nos. of air-con louvers & all necessary accessories	Sq.Ft.	45.00		
	Boxing to be done up-to false ceiling				
	Manufacturing, supplying and fixing box type metre storage with overall depth of 1'6" and height up-till the false ceiling,. comprising of the following.				
	19mm block board hinged double shutter, height as size of the panel with alround beadings 3/4" x 1/2", powder coated handles, piano hinges, magnetic ball catches, lock, locking arrangement, tower bolts etc., all as per directions				
	All visible surfaces to be fixed with 1.0mm thick lamination sheet with matching grains & grooves as per instructions.				
	All internal & rear surfaces to be painted with two coats of enamel paint over a coat of primer / putty as directed to get a smooth finish.				
	This would include the fixing of 2 aluminium air-con louvers on both shutters.				
22	Acrylic Emulsion with POP Base.	Sq.Ft.	3700.00		
	Painting on undecorated / decorated wall and ceiling surfaces with two or more coats of acrylic emulsion (Asian/ Berger make) (as / shade approved by the Architect) of approved brand. It shall include for preparing the surfaces clean, even and smooth with thoroughly brushing with broom, scratching with patti and sand papering respectively, so that the surfaces are free from oil, grease, dirt, mortar droppings & other foreign and loose matter. It shall also include for preparing the surface and filling of holes with plaster of paris before priming coat of whiting / approved primer.				
	The rate shall include cost of all materials such as plaster of paris, whiting /primer, glue (Fevicol), indigo / stainer, brushes, sand paper, patti, dhoti, broom stick, clean water with storage and other containers, labour, scaffolding / ladder charges, cleaning of floors and other sundries etc., all complete to the satisfaction of the Architect.				
23	SYNTHETIC ENAMEL PAINT (ON M.S. WORKS)	Sqft	790.00		
	Painting with synthetic enamel paint of approved brand and manufacture of required colour to give an even shade : Two or more coats on new work over an under coat of suitable shade with ordinary paint of approved brand and manufacture.				
24	<u>L&F Point wiring + Power point wiring</u>				
24a	Point Wiring for light, fan & exhaust fan points controlled thru modular switches complete with boxes & cover plate - The point wiring shall be carried with 3*1.5sq.mm FRLSH stranded Cu. Wires in 20mm OD medium PVC pipe concealed in wall/ floor/ panelling/ partitions or above false ceiling as per requirement. Each Switch board should be provided with suitable capacity fuses/ fuse indicator. - Single points only	Point	116		
24b	For light points- 2 lights controlled thru one 6A modular switch - Same as above but Main point + looped light shall be controlled thru one 6A modular switch (Quote cost of main point + loop for 2nd light)	Point	44		

24b	For light points- 3 lights controlled thru one 6A modular switch - Same as above but Main point + 1st & 2nd looped light shall be controlled thru one 6A modular switch (Quote cost of main point + loop for 2nd light+ loop for 3rd light)	Point	29		
25	6 A switch socket points on Sdb: S/F of 6A switch socket point with 6A modular Type switch & socket. It shall have 3*1.5sq.mm FRLSH stranded Cu. wires as per requirement. The job shall be complete & to the entire satisfaction of the Bank.	Point	25		
26	Circuit Wiring (Light, fan, 6Amps Switch points) : Supply & laying of circuit wiring for light, Fan & 6 Amp. Switch points with 3*1.5sq.mm FRLSH Cu stranded wires laid in 20mm OD medium PVC conduit concealed in wall/ floor/ panelling/ partitions or on the ceiling as per requirement.	m	377		
27	Primary Power Point c/w 16A modular switch & socket - Wiring for Primary 16A raw power Plug point with 2*4+1*1.5 sq.mm FRLSH Cu stranded wires laid in 20mm OD medium PVC conduit recessed in wall/ ceiling including earthing the third pin with 1.5 sqmm Cu wire green/ green yellow colour complete in all respect. The job also includes S/F of 16A modular switches & 16A 3/5 pin modular sockets c/w cover plate & GI/ MS box.	m	27		
	Total -3+ 9+ 4+ 11= 27nos.				
	Reception+ pantry - 3nos. - 1 reception, D/w, 1 pantry				
	CR - 9nos.- 1 screen, 2 for 4 PP on LHS partition, 2 for 4PP RHS wall & 4 ckts for 8PP on CR table				
	LHS - 4nos. - 1 CMI , 1CMII, 1 DGM, 1 AGM				
	RHS o/s CR full ht partition - 11- 2 for 6 officers on 1st & 2nd row, 1 for 3 officer 3rd row, 1 for router, 3 for 6 officers on row 4,5 & 6, 3 for rear 6 officers & 1 for officer rear RHS area o/s stair				
28	Secondary Power points c/w 16A modular switch & socket - Wiring for secondary with 2x 4.0 + 1x 1.5sq.mm FRLSH Cu stranded wires laid in 20mm OD medium duty PVC conduit concealed in wall/ floor/ panelling/ partitions as per requirement. Secondary power point to be inter looped from Primary/ secondary power point. The job also includes S/F of 16A modular switches & 16A 3/5 pin modular socket c/w cover plate & GI/ MS box.	m	26		
	Total -0+ 9+ 4+ 13= 26nos.				
	Reception+ pantry - Nil				
	CR - 9nos.- 1 screen, 2 for 4 PP on LHS partition, 2 for 4PP RHS wall & 4 ckts for 8PP on CR table				
	LHS - 4nos. - 1 CMI , 1CMII, 1 DGM, 1 AGM				
	RHS o/s CR full ht partition - 13- 4 for 6 officers on 1st & 2nd row, 2 for 3 officer 3rd row, 1 for router, 3 for 6 officers on row 4,5 & 6, 3 for rear 6 officers				
	<u>Air - Conditioning</u>				
29	AC Circuit wiring - Wiring of AC circuits with 3core 4.0sq.mm <u>unarmoured</u> Cu conductable XLPE cable in 20mm OD medium PVC conduit laid & concealed in wall/ floor/ panelling/ partitions or run on surface with saddles as per site conditions all complete as required. (1P+ 1N+ 1E)	m	249		
30	Supply & Fixing of Havells MCB protected power unit DBOXx type c/w 25A 2P MCB (Havells DHDDCDP02520503 2P) with proper connections or any equivalent approved by Architect.	Each	12		
31	Wiring for AC voltage stabilizers- Wiring with <u>unarmoured</u> 3c 4sq.mm Cu conductable XLPE cable in 20mm OD medium PVC conduit laid & concealed in wall/ floor/ panelling/ partitions or run on surface with saddles as per site conditions all complete as required. (1P+ 1N+ 1E)	m	34		
32	Supply & Fixing of 63A 2P MCB in 2way Metallic SPN Sb near Outr door unit with proper connections complete in all respects	Each	5		
33	S/Laying of 3c 4sq.mm Copper conductor XLPE insulated armoured Cable from Panel to Out door units regulating MCB complete in all respects including connections at both ends (P+N +E)	m	175		
	<u>UPS Distribution</u>				
	<u>Assuming 2nos. 10KVA UPS (1W+1Sb) 3P input+ 1P output</u>				

34	UPS supply regulating Changeover: S/F of 100A 4P changeover Havells IHCNFE 0063 in SS enclosure near panel for regulating UPS supply including proper connections. The incoming supply shall be tapped from 200A 4P MCCB in panel.	Each	1		
	<i>When branch is closed this change over shall always remain in "ON" position. It will enable supply to UPS even when branch is closed in evening.</i>				
35	S/ F of 100A 4P MCCB in sheet steel enclosure including all connections complete in all respects.(1near Changeovevr & 1 in UPS room)	Each	2		
36	Incoming supply to UPS room: S/laying of 4 core 10sq.mm XLPE insulated armoured Copper conductor cable from proposed MCCB/ MCB main Panel to 4way TPN Db in the UPS room to be laid in 20/ 25mm OD PVC conduit run on surface or concealed in wall/ floor/ flase ceiling including connections at both ends with lugs.	m	55		
	Qty includes length from 100A 4P MCCB near c/o to 100A 4P MCCB (UPS room) + length from 100A 4P MCCB(UPS room) to 10KVA UPS incoming side.				
37	Outgoing supply cable from 10KVA UPS - S/laying of 3core 10sq.mm XLPE insulated un-armoured Copper conductor cable from UPS output side to be run on surface/ floor/ flase ceiling neatly clamped & dressed including connections at both ends with lugs.	m	8		
38	UPS Output Db in UPS Room- S/F of 4way HTPN Db c/w 80A 2P MCB as incomer & 2nos.32A 2P MCB's complete in all respects as under.	Each	1		
	R Phase space- 63A 2P MCB (6a)				
	Y Phase space- 40A 2P (6b)+ 16A 2P for FDAS				
	B Phase space- 40A 2P (6c)+ 16A 2P for CC TV				
39	UPS Output Distribution Boards				
39 a	UPS Db - Reception, CMI, CM II, DGM, AGM and area from central CR entrance router to CR end- 11 wrok stations opposite CM 1 & 2 - Location on LHS wall near pillar behind CM 2				
	S/ F of 12way SPN Db Havells DHDN SHODAW12 as under	Each	1		
	Incoming - 63A 2P MCB - 1Nos.				
	1no. 10A 1P MCB for Reception				
	9no. 16A 1P MCB for twin/triple CP - 1 for CM 1, 1 CM2, 1 DGM, 1 AGM + 3 for 9 officers (3in each row - row 1, 2 & 3 starting from CR end)+ 1 for 2 officers in row 4+ 1 router				
39 b	UPS Db - Rear area o/s AGM + officers o/s CR (From conference Room central entrance to front end of office - Location on Rear central wall				
	S/ F of 12way SPN Db Havells DHDN SHODAW12 as under	Each	1		
	Incoming - 40A 2P MCB - 1Nos.				
	1no. 10A 1P MCB for RHS rear end officer near stair entry				
	5no. 16A 1P MCB for twin CP- 2 ckts for 4 officers in row 5&6 (2officers/row) + 3ckts for officers at end o/s AGM				
39 c	UPS Db - Conference Room - Location on RHS wall near pillar rear end				
	S/ F of 12way SPN Db Havells DHDN SHODAW12 as under	Each	1		
	Incoming - 40A 2P MCB - 1Nos.				
	8no. 10A 1P MCB for CP on CR table				
40	Input Wiring for UPS Db's with 3*2.5sq.mm FRLSH Cu. stranded wires to be laid in 20mm OD medium PVC conduit duly laid & concealed in wall/ floor/ panelling/ partitions or above false ceiling as per requirement. The job shall be complete & to the entire satisfaction of the Bank.	m	81		
41	Primary UPS/ Computer points c/w 1*16A modular switch & 3*6A modular sockets including circuit wiring from UPS Db- Wiring for Primary UPS point with 3*2.5sq.mm FRLSH Cu stranded wires laid in 20mm OD medium PVC conduit recessed in wall/ ceiling including earthing the third pin with 2.5 sqmm Cu wire colour complete in all respect. The job also includes S/F of 1*16A modular switch with indicator & 3*6A modular Sockets with shutter c/w cover plate & GI/ MS box. The job shall be complete,nk.	Each	24		
	Total 10+ 6+8= 24				

	Reception, CM1&2, DGM, AGM & officers on work-stations row 1to4 o/s CR-10 nos.- 1 Reception, 2 CM 1&2, 1 DGM, 1AGM, 3 for 9officers work stations in row 1, 2 & 3 and 1 for 2 officers work stations in row 4 and 1 for router				
	Rear end o/s AGM (7b)- 6nos. -2 for 4 officers in row 5&6 o/s CR+ 3 for 6 officers o/s AGM + 1 officer RHS rear end in entrance area from stairs				
	CR (7c Db) 8 on CR table				
42	Secondary UPS/ Computer points c/w node consisting of 1*16A & 3*6A modular switch & sockets including circuit wiring from primary points- Wiring for Secondary UPS point with 3*2.5sq.mm FRLSH Cu stranded wires laid in 20mm OD medium PVC conduit recessed in wall/ ceiling including earthing the third pin with 2.5 sqmm Cu wire complete in all respect. The job shall also include S/F of 1*16A modular switch with indicator & 3*6A socket with shutter c/w cover plate & GI/ MS box. The secondary point shall be interlooped from primary or secondary UPS point.	Nos.	17		
	Total 12+ 5+ 0 = 17				
	Db 7a - CM1&2, DGM, AGM & officers on work-stations row 1to4 o/s CR- 12 nos.- 2 CM 1&2, 1 DGM, 1AGM, 6 for 9officers work stations in row 1, 2 & 3 and 1 for 2 officers work stations in row 4 and 1 for router				
	Rear end o/s AGM (7b)- 5nos. -2 for 4 officers in row 5&6 o/s CR+ 3 for 6 officers o/s AGM				
	CR (7c Db) - Nil				
	<u>Distribution Mains</u>				
43	S/F of 3no.200A 415V Kit Kats <u>with extension strips</u> rewirable Porcelain fuse carrier & base Havell - IHKKRT 4200 c/w 4 hole heavy duty terminals with shroud & cover including making of connection from electronic meter c/w wooden board etc.	Set	1		
44	Main Incoming Panel				
	Supply, Installation, Testing & Commissioning of main distribution board panel fabricated of 18swg (powder coated) comprising of	Each	1		
	Indicator lamps 3 nos.				
	Voltmeter c/w rotay switch				
	Ammeter c/w rotay switch & associated CT's				
	Busbar 1nos. - (each of RYB +N) copper 100 amp each				
	Incomer - 200A 4P MCCB adjustable 25kA Havells				
	200A 4P Changeover - Socomac/ Havells IHCNFO 0200				
	<u>Outgoing</u>				
	<u>AC</u>				
	125A 4P MCCB 25KA adjustable				
	63A 2P MCB's - 5+1=6nos. For cassette AC distribution (5 Cassette + 1 spare) - 2 on each phase				
	32A 2P MCB's - 9+2=11nos. For AC distribution (9AC's o/s CR) & 2 spare - 3-4nos. On each Phase				
	CR 3nos. Split AC's to be regulated thru CR VTPN Db				
	<u>CR</u>				
	100A 4P MCCB 25kA adjustable - 1no. + 1 spare= 2nos.				
	<u>UPS</u>				
	100A 4P MCCB - 1no. - For UPS <u>should be tapped/ connected from incoming side of the 200 4P incoming MCCB.</u>				
	<u>From Main Bus</u>				
	63A 4P MCB- 5nos. - 3nos. LHS, Rear, recption VTPN & 2 spare				
	32A 2P MCB's - 3nos. for signage & 2 spare				
	Earth bus bar 25x5mm GI strip - 2nos. At the bottom.				
	All MCCB's & MCB shall be of Siemens/ Hagers/ ABB/ Schnider/ MDS				
45	S/ laying of XLPE insulated armoured Aluminium Conductor cable including cost of lugs, cable glands etc. The cable should be laid on surface with proper clamps @750mm or laid & concealed in wall/ floor/ PVC Conduit/ false ceiling complete in all respect. All connection shall be done thru proper size of lugs				
	4c 70sq.mm from Pole to fuse Kit Kats to Main Panel	m	23		

46	S/ laying of XLPE insulated armoured Copper Conductor cables including cost of lugs, cable glands etc. The cable should be laid on surface with proper clamps @750mm or laid & concealed in wall/ floor/ PVC Conduit/ false ceiling complete in all respect. All connection shall be done thru proper size of lugs				
	4c 16sq.mm for CR VTPN Db	m	27		
	4c 6sq.mm for VTPN Db's	m	53		
47	<u>VTPN Db for AC, Raw Power and L&F - Conference Room</u>	Each	1		
	SITC of VTPN Db with MCB as incomer complete in all respects as under				
	8way VTPN Db - CR- Location - RHA wall rear end near pillar				
	Incomer - Electromechanical 63A 4P RCBOs used as (TPN & FP RCBOs) 100mA - Havells DHBMACTN8100063				
	32A 1P MCB - 3nos. For AC				
	20A 1P MCB - 9nos. for Twin Power points - 2nd PP to be looped from 1st(4nos. RHS wall+ 4 on LHS partition+ 8 on CR+ 2 for screen)				
	10A 1P MCB- 6nos. for L & F				
	Blanking Plates - 6				
	All connection shall be done thru proper size of lugs				
48	<u>VTPN Db for Raw Power and L&F - Hall & Reception area</u>				
48 a	LHS Db for CM1 & 2, DGM & central area from CR end to CR central entrance upto Row 1, 2, 3 & 4 including router - SITC of 8way VTPN Db as under	Each	1		
	Location - LHS wall near pillar behind CM 2				
	Incomer - 63A 4P MCB				
	32A 1P MCB - 5nos. For AC (2 CM1 & 2, 1 DGM, 2 AC front Row, 1, to 4)				
	25A 1P MCB - 3nos. for Triple Power points - 2nd & 3rd PP to be looped from 1st and 2nd PP (3nos. For 9 officers o/s CR in Row1, 2 & 3)				
	20A 1P MCB - 5nos. for Twin Power points - 2nd PP to be looped from 1st(2 CM1 & 2, 1 DGM, 1 for 2 officers in row 4 & 1 Router)				
	10A 1P MCB- 7nos. for L & F				
	Blanking Plates - 4no.				
	All connection shall be done thru proper size of lugs				
48 b	Rear end DB for rear area+ AGM + Row 5 & 6 in central area near CR central entrance- SITC of 8way VTPN Db as under	Each	1		
	Location - Rear wall behind 2 officers				
	Incomer - 63A 4P MCB				
	32A 1P MCB - 3nos. For AC (1 AGM+ 2 rear area)				
	20A 1P MCB - 6nos. for Twin Power points - 2nd PP to be looped from 1st(1 AGM+ 3 for rear 6 officers+ 2 for 4 officers on row 5 & 6)				
	10A 1P MCB- 6nos. for L & F				
	Blanking Plates - 9 no.				
	All connection shall be done thru proper size of lugs				
48 c	Reception+ Utility area Db - SITC of 4way VTPN Db Single door complete as under	Each	1		
	Location - Near panel				
	Incomer - 63A 4P MCB				
	32A 1P MCB - 1nos. For AC				
	16A 1P MCB - 3nos. For Single PP - 1 Reception, D/w & Pantry				
	10A 1P MCB- 6nos. for L & F				
	Blanking Plates - 2no.				
	All connection shall be done thru proper size of lugs				
49	Glow sign Board - Circuit wiring with 3*1.5sq.mm FRLSH stranded Cu. Wires to be laid in 20mm OD medium PVC pipe laid & concealed in wall/ floor/ panelling/ partitions or above false ceiling as per requirement.	m	12		

50	Timer - Supply of 40 A SP 230 V analog time switch panel(TIMER), in manufacturer sheet steel panel, fully prewired with all components like time switch, MCB, contactor, selector switch, indicating lamp.(1 for sign board)	Nos.	1		
	<u>DG Set Supply</u>				
51	S/laying of 4c 70sq.mm XLPE insulated Armoured Aluminium conductor cable c/w 4mm dia Cu earthwire from proposed DG set to Changeover switch including its connections at both ends with lugs duly clamped with saddles @600mm with MS clamps (Made from 25x3mm MS flat) duly screwed with 32x8mm screws complete in all respect or if required buried in ground as per site conditions	m	14		
	<u>Earthing</u>				
52	Panel/ Power earthing - S/burying of Dual pipe technology (Pipe in Pipe) earthing electrode GI 80mm O/D pipe with 25 micron coating, 3m long. The job also includes S/F of GI strip clamp with two holes (with SS/GI bolts & nuts) on the electrode & taking one lead of 4sq.mm Cu stranded wire upto Main panel complete in all respects with guaranteed E/N voltage of less than 2 volts and resistance less than 1 ohms. The 4sq.mm Cu wire shall be connected to earth bus bars in the panel.	Job	1		
53	UPS earthing - S/burying of Dual pipe technology (Pipe in Pipe) earthing electrode GI 80mm O/D pipe with 25 micron coating, 3m long. The job also includes S/F of GI strip clamp with two holes (with SS/GI bolts & nuts) on the electrode & taking one lead of 4 sq.mm dia Cu stranded wire upto proposed GI strip clamp complete in all respects with guaranteed E/N voltage of less than 2 volts and resistance less than 1 ohms. The 4mm dia Cu. earth wire shall be terminated on a separate 6way earthlink. The connections for UPS & its Db shall be taken from this earthlink.	Job	2		
	Double earthing for UPS				
54	Supply & Fixing of 4sq.mm Cu. Stranded wire on surface or in recess for loop earthing as required earthing to Db's or main panel as required	m	41		
55	S/F of G I Strip earth clamp	Each	1		
	<u>G - SUPPLY & FIXING ITEMS</u>				
56	S/F of Energy efficient recessed mounted LED luminaire - 36w 2'x2' LED recessed light slim panel with super bright LED's & highly efficient light-smoothing optics to deliver superior illumination Crompton Aura -1 model CCR-127-36-57-SL-NWH 220-240V 50Hz or Panasonic/ Jaguar/ Bajaj as approved by Bank/ architect	Each	57		
57	S/F of recessed LED downlighter - 18w LED Spot Round recess mounted LED edge lit slim downlight with die-cast aluminum housing finished in premium white powder with superior light output and integral driver, Efficacy 100lm/w Crompton PEARL ULTIMA - R model LSCRM-18W-WW 220-240V 50Hz or Panasonic/ Jaguar/ Bajaj as approved by Bank/ architect	Each	93		
58	S/F of Surface & wall mounted LED batten -4' long LED 20w Decorative ultra slim round profile LED lighting fixture with extruded polycarbonate, environmental friendly & energy efficient Havells E-Lite LED Pride Plus Neo nxt model no. LHXAQP7PN1W020 1800 Lumens or any make approved by Bank/ Architect	Each	14		
59	S/F of 6000/6500 K,(≥480lumens) Sleek slim Surface mounted 7w/8w LED downlight complete in all respects Philip SM250C LED7S- 6500 PSU WH or equivalent	Each	6		
60	S/F of Flexible LED strip light in 5metres length with 24w consumption IP - 20 protection input voltage 200-240V AC, BIS approved Panasonic PSLM 03250 in RGBW colour (Colour to be selected by Architect/ Bank) complete with energy efficient driver & complete in all respects - dimensions 5000x 10 x2mm (LX WX H	Each	0		
61	S/F of Cove LED batten - Philips Trunk linea Cove light 1000lm 13w (1124x22x36mm) 4000K for cove lighting Philips model 30194 or any make approved by Bank/ Architect	Each	64		

62	S/F of Vertically suspended decorative type 30w LED luminaire with aluminium housing, polycarbonate diffuser and with energy efficient electronic driver Panasonic ABY010303 - 3000K AC 220-240V 50Hz or equivalent Philips or crompton approved by Bank/ Architect	Each	0		
63	S/ F of Philips Flex Accent G2 Track mounted accent lighting luminaire with compact housing and slim gear box with Color rendering Index of 90.Philips ST391T LED10/930 PSU-E NB 1C WH IN - To be used as directed by Architect	Each	0		
64	S/F of wall mounted fan 400mm sweep - Sturdy & heavy duty metallic blades, 120 spokes Nickel Chrome plated guard - Crompton/ Bajaj/ Usha or any make as approved by Bank/ architect	Each	42		
65	S/F of energy saving/ efficient ceiling fan 1200mm sweep double ball bearing type - Anchor model 13400 or equivalent c/w Electronic modular regulator or any make as approved by Bank/ architect	Each	3		
66	Supply & Fixing of metallic fresh air fan 230mm sweep - Havells venti Air DSP metallic range model or equivalent as per LOM	Each	6		
67	Supply & Fixing of Ding Dong Bell Anchor or equivalent as approved by Bank	Each	6		
	<u>H - EPBAX & Telephone system</u>				
	<u>Bank shall use existing EPBAX system alongwith existing telephones available with them</u>				
68	Relocating the existing EPBAX system (with bank) from existing location to the proposed Location complete in all respect.	Job	1		
69	S/F of 50pair MDF Box complete in all respect	Each	1		
70	10 Pair Krone box	Each	4		
71	S/ laying of 50pair unarmoured telephone cable 0.6mm with annealed tinned electrolytic grade Cu conductor, PVC insulated, twisted pairs bunched together in concentric layers to minimize cross talk. The cable shall be wrapped with melinex tape & overall PVC sheathed suitable for indoor telephone wiring conforming to ITD S/WS - 113C and GR/WIR -06/03. The rate should include connections at both ends as required. The wires/ cable shall be Eco friendly, RoHS compliant and Cadmium, Lead & Mercury free.	m	25		
72	S/F on wall/ furniture/ partition recessed type modular telephone single jack with shutter outlet (RJ-11) with mounting box & front plate c/w chase cutting, mending good etc. as required including supply & laying of 2pair unarmoured 0.5mm dia. PVC insulated twisted pairs bunched together telephone cables through 20mm OD PVC conduit as directed by the Bank/ Architect from telephone junction box to telephone socket outlet as required complete in all respects.	Each	30		
73	S/F of Corded landline phone slim design. Switchable tone, pulse setting with alpha numeric Display. The phone shall have 5 redial memory and 30 call logs and caller ID support. Panasonic model KX TSC 62W or equivalent	Each	10		
	<u>As discussed total Telephone points are 30 but only 10new phone sets are being provided. Balance existing available phones shall be used.</u>				
	<u>The quantity indicated may vary.</u>				

	DATA CABLING				
74	Supply & laying of 25mm OD PVC conduit medium c/w junction box, circular box, elbows, bends & other accessories as required by chase cutting on wall, through partition or over false ceiling. The work includes making good all damages to original finish, painting etc. as required.	m	317		
75	Supply & laying of CAT - 6e cables Giga speed D-Link/ Systimax make through pre-laid rigid PVC conduit as directed by the consultant from Server to Switch, Switch to computer data socket including interconnection mending good etc. as required complete in all respects.	m	814		
76	Supply & Fixing of XL RJ 45 toolless information outlet Grey colour cat 6e Giga speed Systimax/ D link make including interconnection with connectors (cost to be borne by contractor) as required complete in all respects.	Each	41		
77	Supply & fixing of 7ft Grey colour Patch chord Giga speed Systimax/ D link make	Each	41		
78	Supply & fixing of 3ft Grey colour Patch chord Giga speed Systimax/ D link make	Each	41		
79	Supply & Fixing of 24 Port patch panel	Each	3		
80	Supply & Fixing of APW President Cyber rack 12U with front VNTD glass perforated front door and removable rear lockin door VNTD steel door CY-3842-D, heavy duty Casters & levelling feets (set of 4), Stationary shelf, Mounting Hardware pack of 10x2, 6 Socket PDU Horizontal x 2, Fan Assembly (2Fans) - Cable entry from rear	Each	1		
81	Supply & fixing of 1U - PVC cable Manager with cover	Each	3		
82	Drain Water Piping Constructed out of PVC Hard Pipes, fitting, accessories, bends, elbows, tees, hanger, support, anchors, ISI approved Finolex/Prince Make (32mm)	RM	225.00		
83	Rate for Extra Piping (Rate above 12 Feet pipe which will be free with each unit) Ref. Piping(Only single distance will be measured between Indoor & Outdoor Units)				
a	Copper Piping Refrigerant along with insulator Piping for Hi Wall 2.0 & 1.5 ton, 1/2 and 1/4 Soft Copper Refrigerant piping with complete fitting, elbows bends supporting arrangements Nissan, Merchant, MET tube, Totaline tube, pressure tested tube and S.I.T.C. of 12.5 Sq.mm. & 6.25 Sq.mm. dia. Copper refrigerant pipe with foam Insulation between Indoor & Out door units with breaking of wall for making hole wherever required For Split Air-Conditioners. And S.I.T.C. of 19 mm dia & 16 mm dia Copper Refrigerant Pipes with Foam insulation between Indoor & Out door units. with breaking of wall wherever required for 2-3 Tr Cassette/ Inverter Air conditioners.	Rm	275.00		
b	S.I.T.C. of 4 core Copper conductor flexible cable between Indoor & Outdoor Unit through holes made as above	Rm	285.00		
	Total Amount				

Note: All rates are excluding G.S.T.

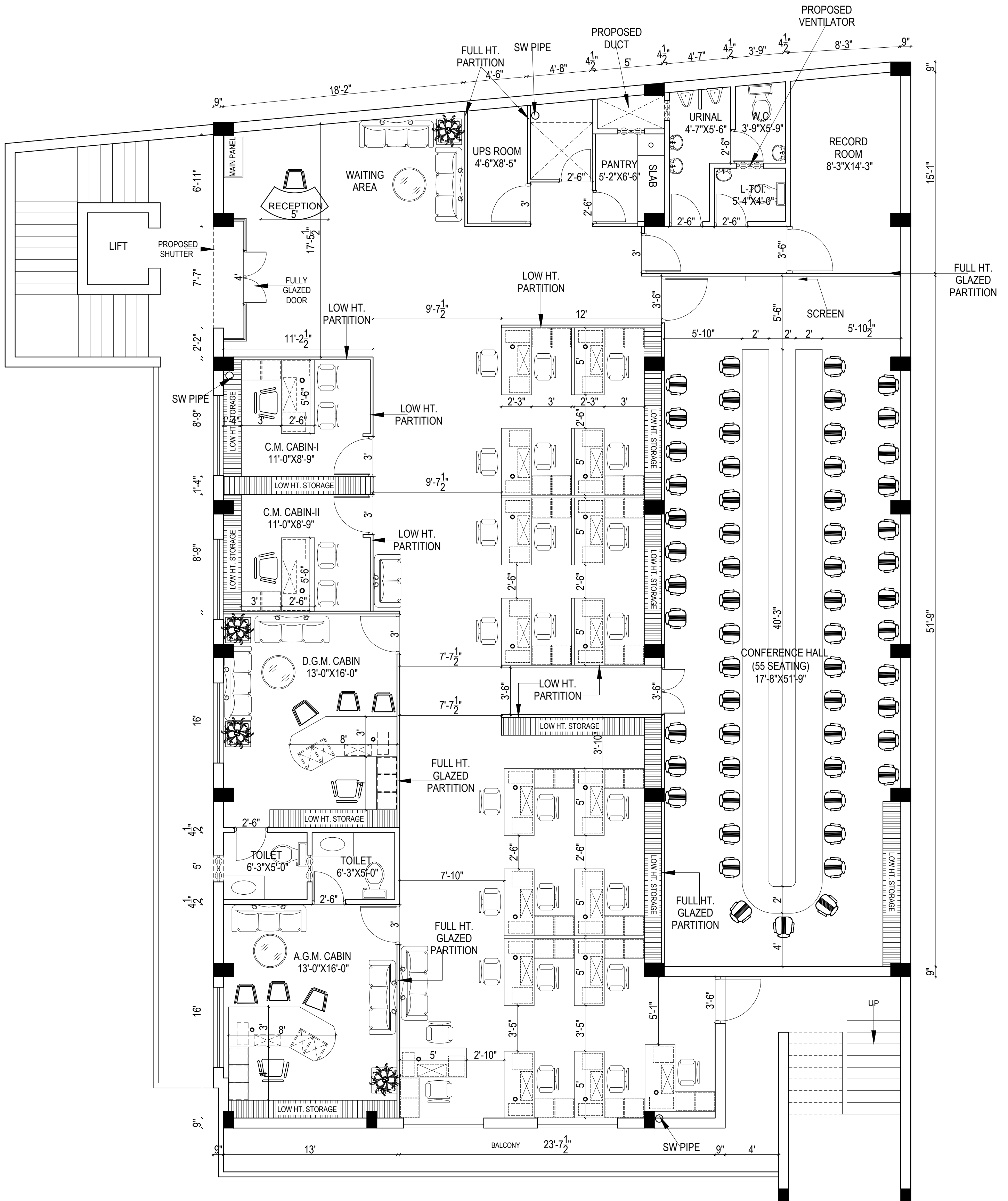
For GUNJAN & ASSOCIATES

 (Ar. GUNJAN KAPUR)
 PROPRIETOR

Ar. Gunjan Kapur

For M/s Gunjan & Associates

ROAD



ROAD

DRG. TITLE:-

FINAL LAYOUT PLAN FOR
BARODA U.P. BANK
ADMINISTRATIVE OFFICE,
BARGAD CHAURAH.

Drg.Title

LAYOUT PLAN

Date

AUG -2021

North

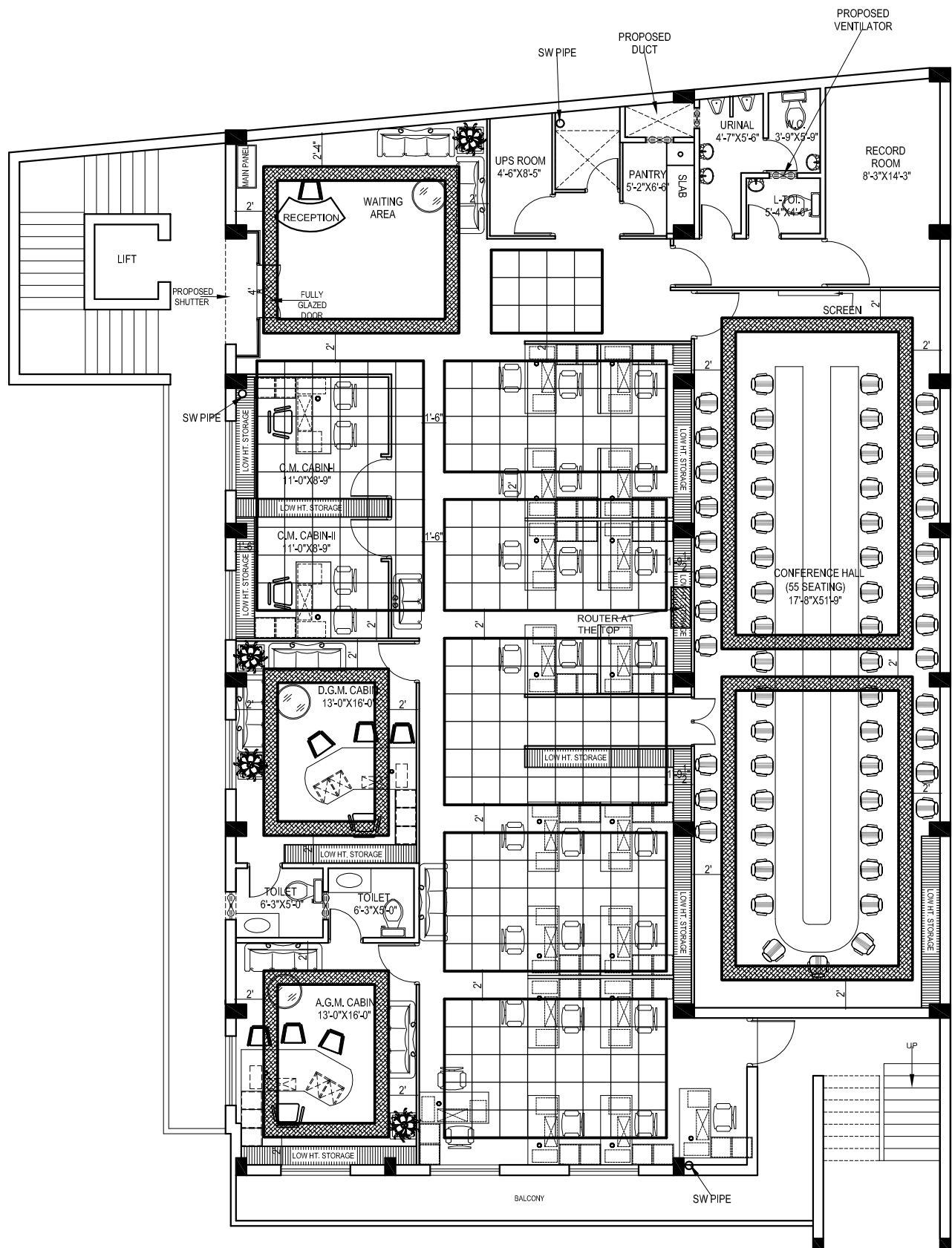


Drawn By

GUNJAN & ASSOCIATES

ARCHITECTS, ENGINEERS, INTERIOR
AND LANDSCAPE DESIGNERS.
141, SAINIK NAGAR,LANE NO-9 RAEBARELI
ROAD LUCKNOW-226002
Phone: +91 9839018489, 9838818489
E-mail:-studio@gunjanandassociates.com
E-mail:-arunjan@yahoo.com
URL:-www.gunjanandassociates.com

ROAD



ROAD

DRG. TITLE:-

FALSE CEILING FOR
BARODA U.P. BANK
ADMINISTRATIVE OFFICE,
BARGAD CHAURHA.

Drg. Title

FALSE CEILING PLAN

Date

AUG -2021

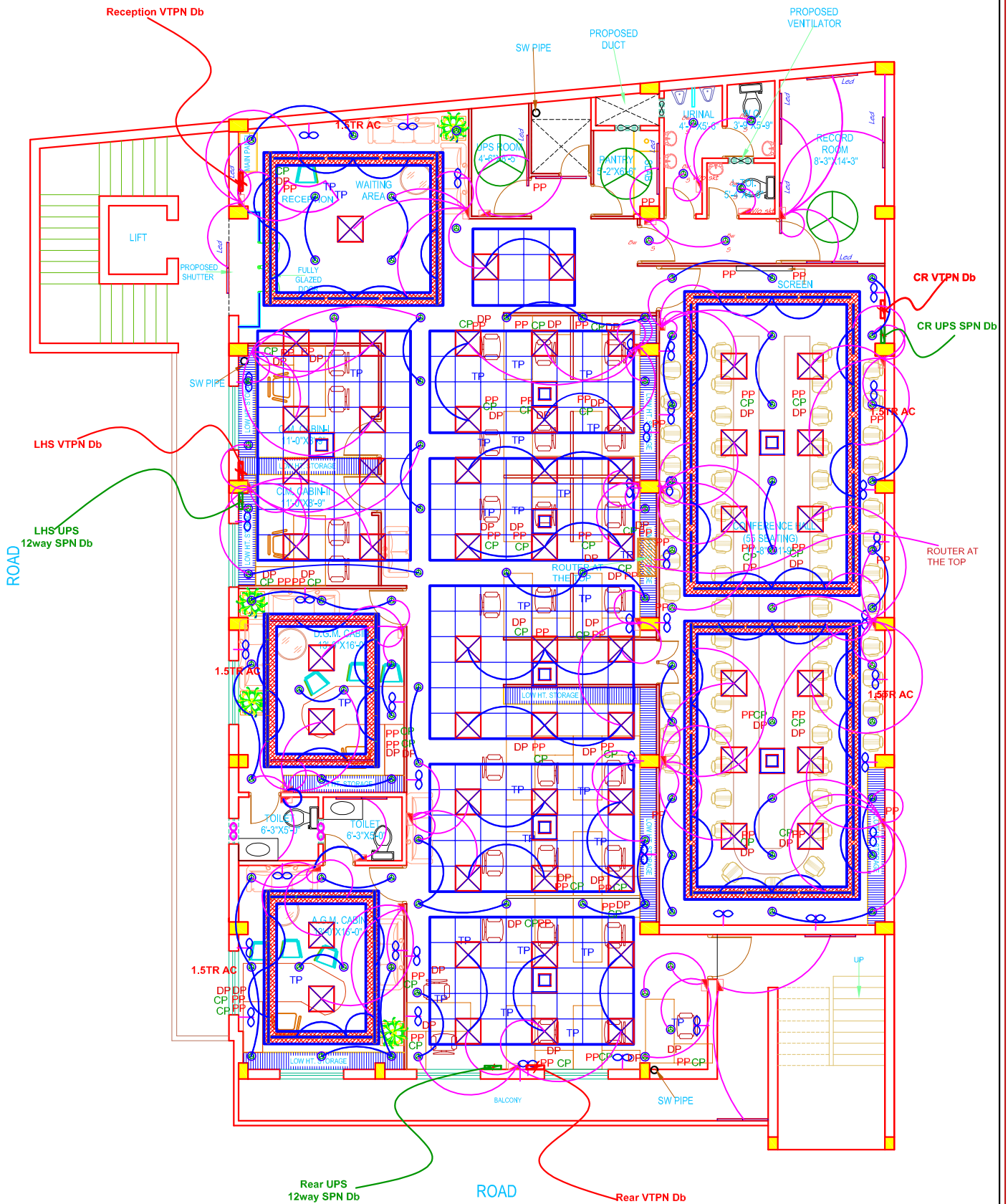
North



Drawn By

GUNJAN & ASSOCIATES

ARCHITECTS, ENGINEERS, INTERIOR
AND LANDSCAPE DESIGNERS.
141, SAINIK NAGAR, LANE NO-9 RAEBARELI
ROAD LUCKNOW-226002
Phone: +91 9839018489, 9838818489
E-mail: studio@gunjanandassociates.com
E-mail: arunjan@yahoo.com
URL: www.gunjanandassociates.com



DRG. TITLE:-

ELECTRICAL PLAN FOR
BARODA U.P. BANK
ADMINISTRATIVE OFFICE,
BARGAD CHAURAHA.

Org.Title

ELECTRICAL PLAN

Date

SEP -2021

North

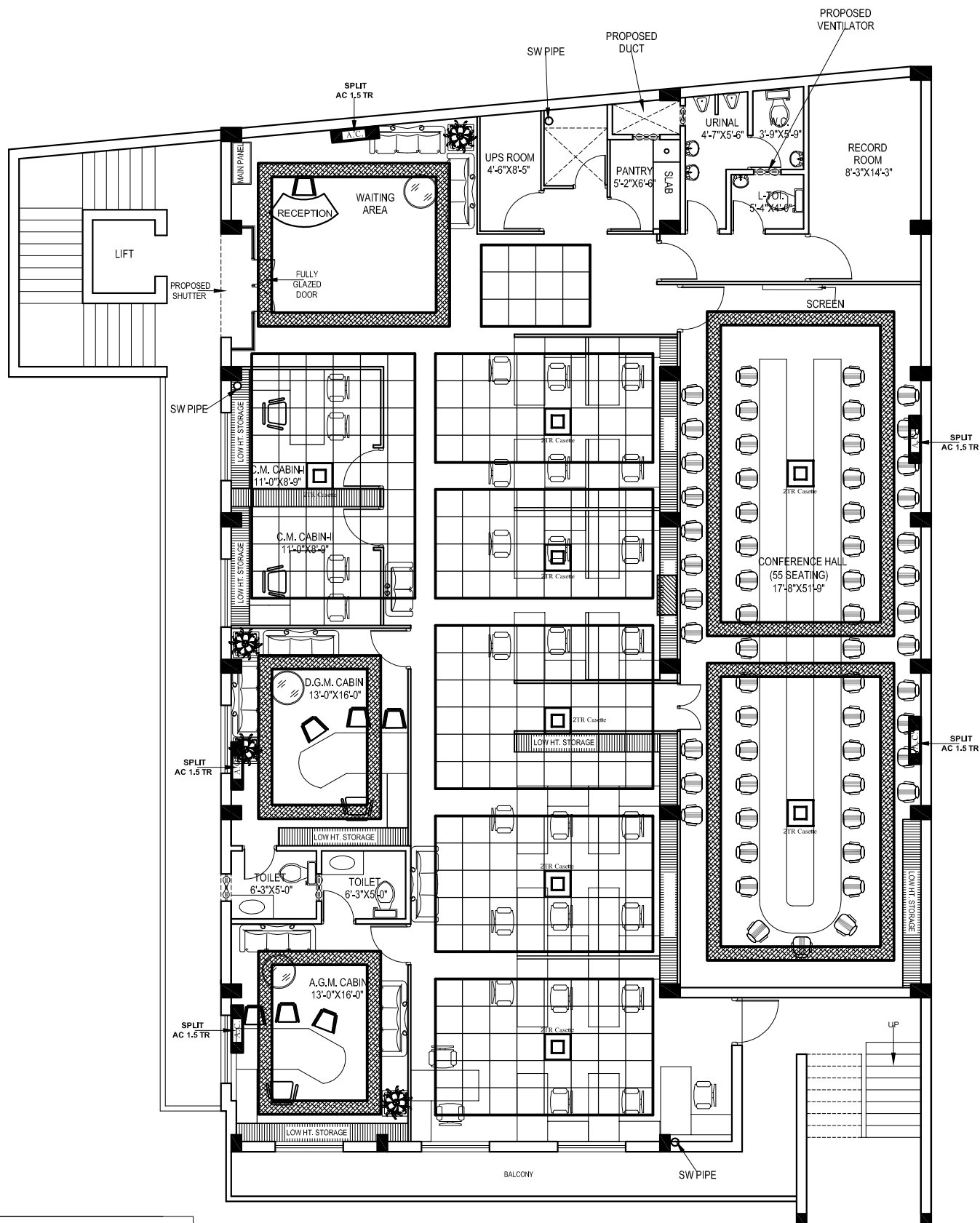


Drawn By

GUNJAN & ASSOCIATES

ARCHITECTS, ENGINEERS, INTERIOR
AND LANDSCAPE DESIGNERS.
141, SAINIK NAGAR, LANE NO-9 RAEBARELI
ROAD LUCKNOW-226002
Phone: +91 9839018489, 9838818489
E-mail: studio@gunjanandassociates.com
E-mail: arunjan@yahoo.com
URL: www.gunjanandassociates.com

ROAD



LEGENDS

SN.	SYMBOLS	DESCRIPTION	NO.
1		2TR CASSETTE	8
2		SPLIT A.C. 1.5 TR.	5

DRG. TITLE:-

A.C. PLAN FOR
BARODA U.P. BANK
ADMINISTRATIVE OFFICE,
BARGAD CHAURAH.

Drg.Title

A.C. PLAN

Date

AUG -2021

North



Drawn By

GUNJAN & ASSOCIATES

ARCHITECTS, ENGINEERS, INTERIOR
AND LANDSCAPE DESIGNERS.
141, SAINIK NAGAR, LANE NO-9 RAEBARELI
ROAD LUCKNOW-226002
Phone: +91 9839018489, 9838818489
E-mail: studio@gunjanandassociates.com
E-mail: arunjan@yahoo.com
URL: www.gunjanandassociates.com

ROAD